

<b>Facility Type</b>	Single Theatre
<b>Programme (Order to Handover)</b>	14 weeks
<b>Facility Size</b>	144m <sup>2</sup>
<b>ModuleCo Scope of Works</b>	Turnkey Package
<b>Procurement Route</b>	Hire

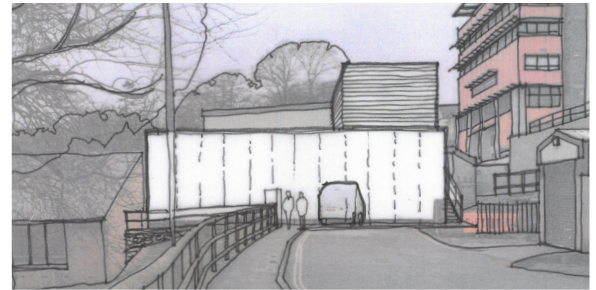
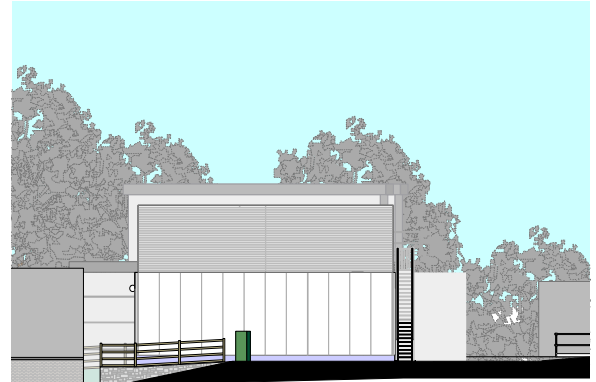
## PROJECT

This scheme provides a single theatre extension to an NHS Trust to meet their current capacity requirements. The facility will link directly into the existing modular theatres provided by ModuleCo in 2008.

ModuleCo are providing a complete turnkey package which includes obtaining planning permission, provision of the facility and all required ground works.

## FACILITY

The facility itself is ModuleCo's standard single theatre footprint of 144m<sup>2</sup>. This facility comprises of a HBN compliant 54m<sup>2</sup> operating theatre with a 7m<sup>2</sup> integral scrub. The facility also includes for an anaesthetic room, a dirty utility, a lay-up prep and an IPS/UPS room. A screened plant deck is also located on the roof of the facility to house the air handling unit and DX units.



FOR A SUCCESSFULLY DELIVERED  
HEALTHCARE PROJECT CALL US ON  
**01242 663050**